

Performatism On forms and Performance – Curated Exhibition

Recent shifts in the architectural profession influenced by a computationally based architecture transform the notion of the architectural discourse from functional terms to performance. The exhibition traces these shifts through the work of 14 international firms including Greg Lynn Forms, Foster and Partners and Peter Eisenman & Associates. The design of the exhibition investigates the dynamic streaming and subsequent tracing of virtual bodies in the gallery space. An agent based system simulates movements, connecting, reacting to and transforming a wide range of influential forces. The tracing of the bodies in space determine locations for the exhibition of graphics, video and physical models in the gallery space.

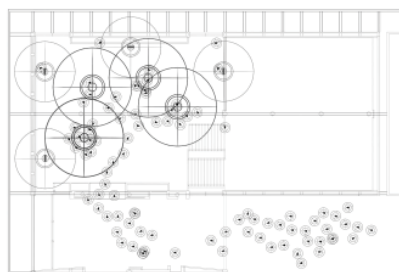
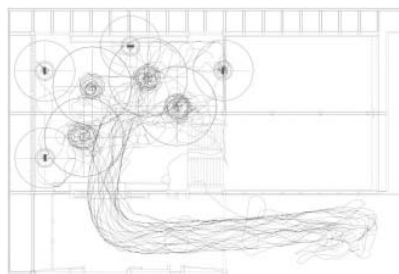
Fact Sheet

Client Tel Aviv Museum of Art
Location Tel Aviv, Israel

Phase 1 (2008) Preliminary design and computation
Phase 2 (2008) Final design and construction

Design Open Source Architecture and Yasha Grobman
Computation Open Source Architecture and Yasha Grobman
Prototyping Open Source Architecture and Yasha Grobman

Budget \$60,000
Size 15,000 sqf



OSA
Open Source Architecture Design Research

E: info@o-s-a.com
W: www.o-s-a.com

USA: +1-310-804-0739
CA: +1-315-877-4351
IL: +972-522-998931