

IsoMorph Design research for GRP Stations

IsoMorph is a prototype of stations to be built along a pipeline to serve as maintenance, gas delivery and inspection sites. The locations of the stations vary from urban to rural, mountainous to plains while the range of variables that include program and size demand a flexible design solution. IsoMorph is based on a kit-of-parts that encourages customization with a minimal amount of components. Variability in height and width of the building is achieved through the assembly of a series of ribs designed from a single glass fiber reinforced plastic profile. The ribs are designed so that the outer skin is simultaneously structure, cladding, diffused natural lighting, signage and envelope.

Fact Sheet

Client Israel Gas Company

Location Israel

Phase 1 (2004) | Preliminary design and computational algorithm

Design Open Source Architecture

Computation Open Source Architecture

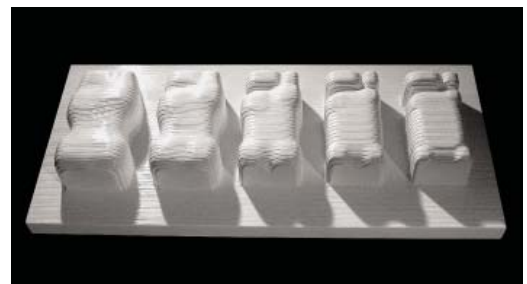
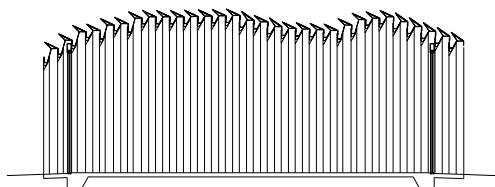
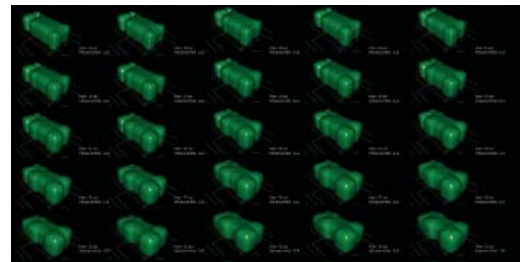
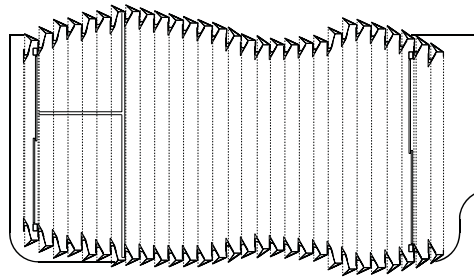
Engineering and material consultant

Neumann and co., Israel

Prototype Open Source Architecture

Budget n/a

Size 1500 to 5000 sqf (per station)



OSA

Open Source Architecture Design Research

E: info@o-s-a.com

W: www.o-s-a.com

USA: +1-310-804-0739

CA: +1-315-877-4351

IL: +972-522-998931

