

Greenfield Renovation What happened to the inside?

The Greenfield renovation project seeks ways to amplify programmatic differentiation between served and serving functions in a Los Angeles loft space. The delineation between the bathrooms and the bedrooms is heightened with the introduction of a continuous sliding wood wall. Storage devices are conceived as transitional systems between physical and programmatic attributes. This computationally-driven design induces a multi-dimensional approach to the geometry and materiality of objects such as the partition walls of the office space. Here, neutral horizontal lines establish a multitude of segments that transform the perception of the surface and volumetric condition of the room.

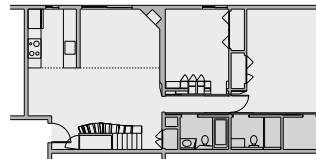
Fact Sheet

Client Private
Location Los Angeles

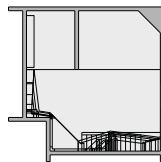
Phase 1 (2006) Preliminary design and computation
Phase 2 (2010) Final design and construction

Design Open Source Architecture
Computation Open Source Architecture
Prototyping Open Source Architecture

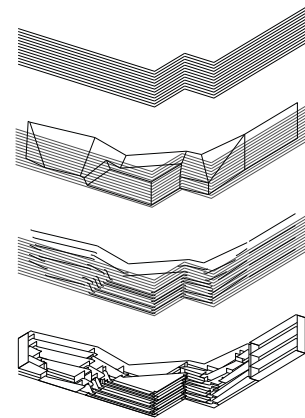
Budget n/a
Size 1,100 sqf



ground floor plan



loft floor plan



shelving design generation diagrams



sliding doors and bathroom

OSA
Open Source Architecture Design Research

E: info@o-s-a.com
W: www.o-s-a.com

USA: +1-310-804-0739
CA: +1-315-877-4351
IL: +972-522-998931